

TPMS SERVICE KITS

TPMS SERVICE KITS



The OEM requires that the valve stem components are replaced every time the tire is serviced on vehicles with TPMS.



Clamp-In Kit Components

Replacement Reason

Result

(A) Valve Core	Nickel plating strips leading to galvanic corrosion & seized valve cores	Leak at valve core, potential broken valve stem
(B) Valve Cap w/seal	Valve cap seal wear	Allows moisture into core
(C) Hex Nut	Plating worn off, treads corrode	Leak path at valve stem
(D) Grommet/ seal	Crack, deteriorate and leak over	leak path at valve stem
(E) Metal washer (some applications)	Washer conforms to rim during installation	Leak path at valve stem
Clamp-In Kit Components		
(F) Rubber TPMS snap-in valve	Crack, deteriorate and leak over time	Leak path at valve stem

Refer to manufacturer's specifications for proper torque requirements when replacing hex nuts and valve cores. These specifications can be found in the Dynamic TPMS Service Kit Application Guide.

6-102

Buick, Cadillac, Chevrolet, GMC, Hummer, Isuzu, Pontiac, Ram, Saab, Saturn

Cross-reference:
20004, 20006, 1070K, 92-0125



6-103

Cadillac, Chevrolet, Chrysler, Dodge, Infiniti, Isuzu, Jeep, Mitsubishi, Nissan, Subaru

Cross-reference:
20003, 1080K, 92-0140



6-106

Ford, Lincoln, Mercury

Cross-reference:
20002, 1060K, 92-0115



6-108

Buick, Cadillac, Chevy, Chrysler, Dodge, GMC, Hyundai, Jaguar, Jeep

Cross-reference:
20030, 1050K, 92-0150



6-109

Acura, Honda, Hyundai, Kia

Cross-reference:
20021, 2000K, 92-0246



6-110

Audi, BMW, Mercedes, Mini, Porsche, Volkswagen

Cross-reference:
20023, 1090K, 92-0261



6-111

Acura, Honda, Kia, Lexus, Pontiac, Scion, Subaru, Toyota

Cross-reference:
20032, 1100K, 92-0215



6-112

Infiniti, Mitsubishi, Nissan

Cross-reference:
20010, 1130K, 92-0130



6-115

Audi, VW

Cross-reference:
20017, 1030K, 92-0235



6-116

Honda, Infiniti, Lexus, Nissan, Toyota

Cross-reference:
20031, 1110K, 92-0135



6-117

Lexus

Cross-reference:
20033, 1120K, 92-0155



6-120







Chevrolet, Chrysler, Dodge, Infiniti, Jeep, Mitsubishi, Nissan, Ram, Suzuki, Toyota

Cross-reference:
20016, 2030K, 92-202



TPMS SERVICE KITS & REPLACEMENT VALVES

TPMS SERVICE KITS

6-122 Saab, Saturn, Suzuki, Volvo Cross-reference: 20009, 2010K, 92-0195 	6-125 Cadillac, Chevrolet, GMC Cross-reference: 20015, 2020K 	6-127 Acura, Honda, Hyundai, Kia, Toyota Cross-reference: 20019, 2040K, 92-0244 
6-129 Audi, VW Cross-reference: 20017, 1031K 	6-138 Acura, Dodge, Honda, Hyundai, Infiniti, Jeep, Kia, Mazda, Mini, Mitsubishi, Nissan, Suzuki, Volkswagen, Volvo Cross-reference: 20032, 7020K, 92-3312 	6-139 Acura, Chrysler, Dodge, Jeep, Nissan Cross-reference: 20013, 7000K, 92-3311 

TPMS REPLACEMENT VALVES

6-201 Audi, Chevrolet, Chrysler, GMC, Hyundai, Mazda, Mitsubishi, Pontiac, Suzuki, Volkswagen, Volvo Cross-reference: N/A 	6-203 Chrome Valve for Ford Shelby Cobra Optional replacement for 6-207A & DVT-PRO Sensor Cross-reference: VS925C 	6-204 Honda (Long Valve) Cross-reference: 20035, 1097K 
6-205 Acura, Honda, Hyundai, Kia (Short Valve) Cross-reference: 20036, 1096K 	6-206B Mercedes Cross-reference: 20023, 1040K, 92-1170 	6-207A Buick, Cadillac, Chevrolet, Chrysler, Dodge, Ford GMC, Hyundai, Jeep, Kia, Lincoln, Mazda, Mercury, Mitsubishi, Pontiac, Saab, Suzuki, VW, Volvo Cross-reference: 20008, 20018, VS950, 92-0145 
6-207B TPMS High Speed Snap-In Rubber Valve Consolidates valves 6-207A, 6-213, 6-210, 6-244 Cross-reference: 20008, 20018, VS950 / VS20 / 20045, 20046 / VS20 	6-208 Cadillac, Chrysler, Dodge, Infiniti, Jeep, Mitsubishi, Nissan Cross-reference: VS90 	6-209 Hyundai Cross-reference: VS1010 
6-210 Kia, Volvo Cross-reference: 20046 	6-211 Jeep, Ram Cross-reference: VS65 	6-213 Acura, Buick, Cadillac, Chevrolet, Ford, GMC, Honda, Hyundai, Kia, Lincoln, Mazda, Nissan, Toyota Cross-reference: VS2 

TPMS REPLACEMENT VALVES

TPMS REPLACEMENT VALVES

6-218 Dodge Sprinter Cross-reference: 20036, 1098K, 92-1170 	6-220 Audi 4, BMW, Porsche Gen I (Silver - 43 mm) Cross-reference: 1092, RDV001 	6-221 BMW Gen I (Green - 48 mm) Cross-reference: 1093, RDV002 
6-222 BMW, Mercedes Gen I (Black - 49 mm) Cross-reference: 1094, RDV003 	6-223 BMW, Mercedes Gen I (Orange - 51 mm) Cross-reference: 1095, RDV004 	6-225/6-225B Aluminum Optional Replacement Valve for 6-207A & DVT-PRO Sensor Cross-reference: VS925A, 34000 
6-228S BMW, Chevrolet, Chrysler, Dodge, Jeep, Mercedes, Mitsubishi, Ram, Toyota Cross-reference: 9066K 	6-231C Adjustable Valve for Acura, Chrysler, Dodge, Honda, Hyundai, Infiniti, Jeep, Kia, Mazda, Mini, Mitsubishi, Nissan, Suzuki, VW, Volvo Cross-reference: VS70 	6-235 Alfa Romeo, Aston Martin, Cadillac, Chevrolet, Infiniti Cross-reference: VS40 
6-236 Hyundai, Kia Cross-reference: VS965 	6-240 Audi, BMW, Mercedes, VW Gen II (Silver - 43mm) Cross-reference: RDV021 	6-241 BMW Gen II (Green - 48mm) Cross-reference: RDV022 
6-242 Audi, BMW, Porsche, VW Gen II (Black - 49mm) Cross-reference: RDV023 	6-243 BMW Gen II (Orange - 51mm) Cross-reference: RDV024 	6-244 Rubber Snap-In Valve Ford, Lincoln, Subaru Cross-reference: VS20 
6-245 Metal Clamp-In High-Pressure Valve Ford, Lincoln Cross-reference: VS240MC 	6-270 Toyota Cross-reference: VS312 	6-284 Brushed Metal BLE Valve - Tesla Cross-reference: VS90 
6-284B / 6-284G Black Metal & Graphite Metal BLE Valve -Tesla Cross-reference: VS90 	6-437 TPMS Ford E-Series Super Duty Chrome Valve Cross-reference: VS241 	6-503 Nissan Cross-reference: VS30 

TPMS REPLACEMENT VALVES & RETRO KITS

TPMS REPLACEMENT VALVES

6-507

Toyota

Cross-reference:
VS15



6-543C

Ram Dually w/OE Alloy Wheels

Cross-reference:
VS35

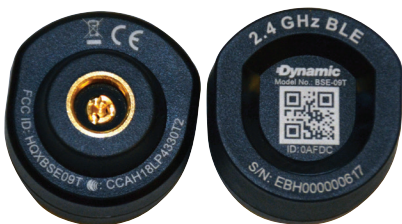


RETRO FIT TPMS SENSORS

Your TPMS (Tire Pressure Monitoring System) is your vehicle reports real-time tire pressure and tire temperature and warns you when one or more tires are significantly under-inflated to avoid unsafe driving conditions, poor fuel economy, and tire wear.

However, there are many instances where TPMS does NOT come standard including trailers, ATV's, motorcycles and more. That's where Dynamic Bluetooth Low Energy (BLE) TPMS Retro Kit sensors can help!

External Retro Kit Sensors No. DY-BLE-E



NOTE: Not
intended to
submerge in
water

- For Metal Valves Only
- Range - 20' (6.096 meters)
- Screws on the valve like a cap
- Swap from one wheel/vehicle to another
- For trucks and bus level tires which can handle up to 185 psi

Internal Retro Kit Sensors No. DY-BLE-I



NOTE: Waterproof
(for submergence in water)

- Range - 20' (6.096 meters)
- Mounts to the inside the tire
- Comes with Rubber Snap-In Valve (6-207A)
- Optional Metal Valves: Aluminum (6-225), Chrome (6-203), Black Aluminum (6-225B)

TPMS Reader No. DY-BLE-R



- Easily install the Repeater with two wires near the back of the hauling vehicle
- No pairing needed
- Extends the signal of sensor up to 16'4" (5 meters)

TPMS ASSORTMENTS

TPMS SERVICE KIT & REPLACEMENT VALVES ASSORTMENTS

Dynamic Service Kit & Replacement Valve Assortments contain all of the popular fittings required for TPMS tire servicing. For both domestic and import cars and light trucks.

Each assortment comes in a durable plastic case that keeps all of the fittings organized and easy to find. The detailed lid insert identifies each fitting with a graphic reference and size. Reorder part numbers, quantities and UPC codes are also shown.

Available Assortments:

See Automotive Service Parts Assortment Catalog for specific part numbers and quantities



Valve Maintenance Kit Assortment No. DY-TPMS-16

OE Replacement Valve Maintenance Kit most popular TPMS service kits for most domestic and imported cars and light trucks.

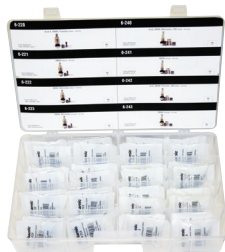
- 17 part numbers
- 350 total pieces
- Case measures: 15-3/4"W x 3-1/4"H x 9"D



Valve Stem Assortment – No. DY-TPMS-16VSR

Assortment of popular TPMS replacement valve stems.

- 16 part numbers
- 52 total pieces
- Case measures: 15-3/4"W x 3-1/4"H x 9"D



Valve Stem Assortment No. DY-TPMS-VSEURO

Assortment includes replacement of corroded or broken OE TPMS valve stem.

- 8 part numbers
- 32 total pieces
- Case measures: 15-3/4"W x 3-1/4"H x 9"D